

### **17 S. Chadbourne**

This 6 story office building is 33,000 square feet and includes an 18,700 square foot parking lot. This is a multi-tenant office building ready to lease in downtown San Angelo, one block from the Tom Green County Court House. Brick Construction and all floors have bathrooms and sprinklers in place. All units are ready to lease.

The Continental Building is located in downtown San Angelo, one block from the Court House and two blocks from Shannon Hospital a major medical complex. The parking lot is attached to the back of the building and fronts on Beauregard



### **30 S. Chadbourne**

CAPADOR SPRINGS LP

Lot: 21 & 22, Blk: CC, Subd: SAN ANGELO CATHOLIC BLOCK

\$153,220



### **115 S. Chadbourne**

JUICE MULE INC

Blk: 8, Subd: SAN ANGELO ADDITION, SOUTH 25 FEET OF LOT 11

\$34,610

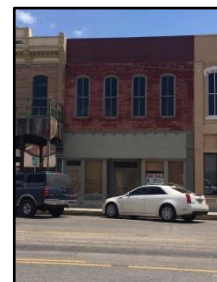


### **116 S. Chadbourne**

SHELL ENTERPRISES LLC

Acres: 0.075, Blk: 7, Subd: SAN ANGELO ADDITION, S 1/2 OF LOT 20 & S 25 FT OF N 50' W 30FT OF LOT 2

\$116,540



**117 S. Chadbourne**

BUSINESS PERSONAL PROPERTY SAISD  
\$30,300



**119 S. Chadbourne**

**LEASED, 2015**



**201 S. Chadbourne**

Trimble-Batjer Building



**215 S. Chadbourne**

10,060 square feet, formerly Cox-Rushing Department Store. The building was built in 1913. It underwent several expansions and renovations in the 1950s.



**311 S. Chadbourne**



**318 S. Chadbourne**



**320 S. Chadbourne**



**325 S. Chadbourne**



**331 S. Chadbourne**



**333 S. Chadbourne**



## 11 North Chadbourne



## 12 North Chadbourne

### First Baptist Church

Blk: HARRIS BLK, Subd: SAN ANGELO HARRIS BLOCK, N25.45' OF LOT 3 & N25.7' OF S50' OF LOT 27



## 14 N. Chadbourne

### First Baptist Church

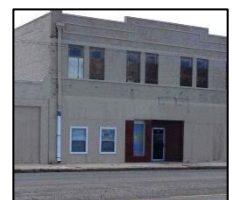
Blk: HARRIS BLK, Subd: SAN ANGELO HARRIS BLOCK, S25 FT OF LOT 4 & W11.67 FT OF N 25 FT OF S 75 FT OF LOT 27



## 28 N. Chadbourne

### First Baptist Church

Blk: HARRIS BLK, Subd: SAN ANGELO HARRIS BLOCK, S 25 OF LOT 6 & S25 OF N150 OF LT 9



## 30 N. Chadbourne

### First Baptist Church

Blk: HARRIS BLK, Subd: SAN ANGELO HARRIS BLOCK, N 1/2 OF LOT 6



**31 N. Chadbourne**



**33 N. Chadbourne**



**50 N. Chadbourne**



**61 N. Chadbourne**



**106 N. Chadbourne**



**226 N. Chadbourne**



**230 N. Chadbourne**



**311 N. Chadbourne**



**22 W. Twohig**



**24 W. Twohig**



**25 W. Twohig**



**33 W. Twohig**



**102 E. Twohig**



**123 E. Twohig**

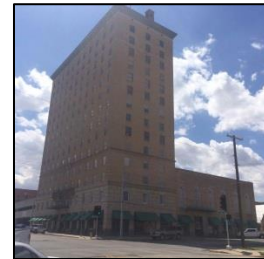


### **12 E. Twohig**

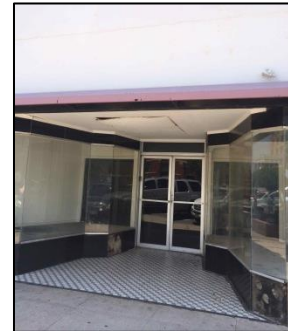
Large 4-story commercial building.  
Each floor approximately 6,000 square feet  
First 2 floors are updated to code and finished with a security system and fire alarm.  
3<sup>rd</sup> 7 4<sup>th</sup> floors are open shell – great space  
For offices or condominiums.  
Includes a basement with elevator reaching all floors.



### **36 E. Twohig**



### **7 W. Beauregard**



### **11 W. Beauregard**

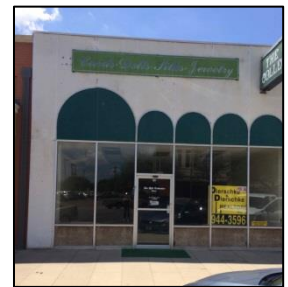




**13 W. Beauregard**



**19 W. Beauregard**



**105 - 107 W. Beauregard**



**122 S. Oakes**



**1 W. Concho Ave**



**5 W. Concho Ave.  
7 W. Concho Ave**



**16 W. Concho Ave**



**28 W. Concho Ave**



**111 W. Concho Ave**



**1, 3, 5, 7, 9 E. Concho Ave**  
*(retail space 1<sup>st</sup> floor)*

Property purchased 2015

